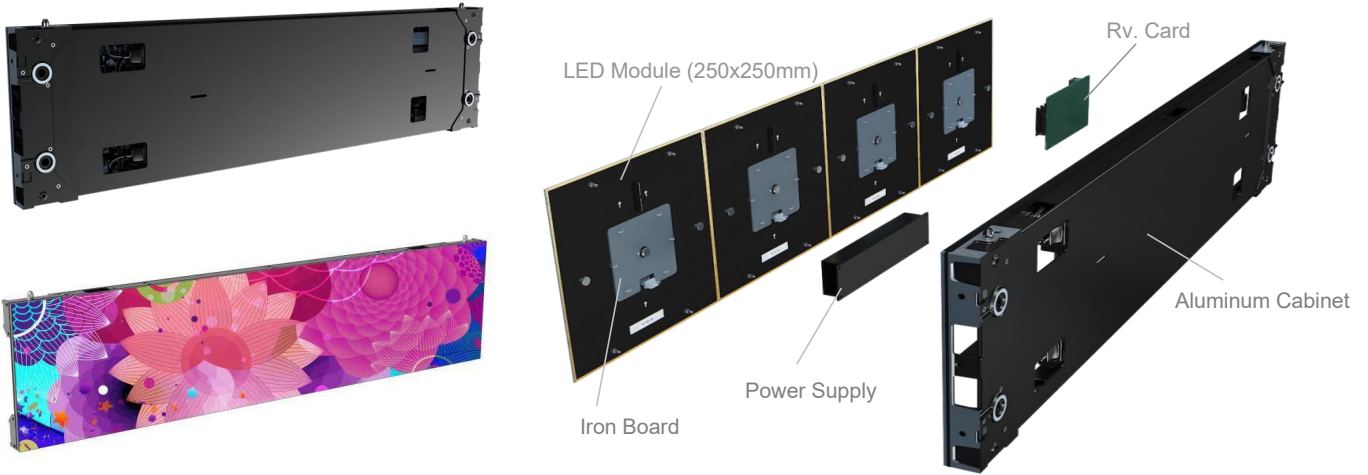


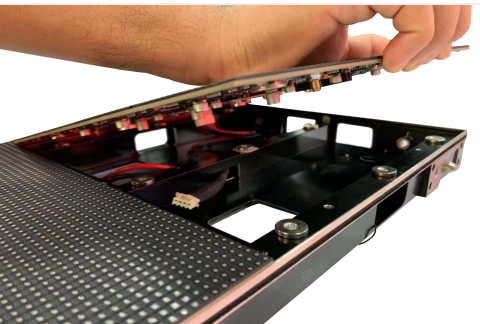
AeroV Indoor Magnetic Front Service Series

P1.95/P2.6/P3.91mm



- Easy & Fast Installation
- Light Weight(6kg) & Slim(40mm)
- Horizontal & Vertical Installation
- High Precision
- Magnetic Front Maintenance
- Flexible Cabinet - Standard Cabinet / 90° Combination

Specification



Parameters	Unit	AVIF-1.95	AVIF-2.6	AVIF-3.91
Pixel Pitch	mm	1.95	2.6	3.91
Pixel Configuration	R/G/B	SMD 3-in-1		
LED Size	mm	SMD1515	SMD2020	SMD2020
Pixel per Module (W x H)	Pixels	128x128	96x96	64x64
Module Size	mm	250x250	250x250	250x250
Pixel per Cabinet (W x H)	Pixels	512x128	384x96	256x64
Cabinet Size (WxH)	mm	1000x250	1000x250	1000x250
Cabinet Weight	kg	6	6	6
Cabinet Thickness	mm	40mm		
Brightness	nits	≥600	≥600	≥600
Color Temperature	deg.K	3000-9500		
Viewing Angle - Horizontal	deg.	120		
Viewing Angle - Vertical	deg.	120		
Operating Temp. Range	deg. C	-20 to +50		
Pixels per sqr. meter		262,144	147,456	65,536
Minimum Viewing Distance	m	1.95	2.6	4
Colors		4.4 Trillion		
Gray Scale	Levels	16384		
Frame Rate	Hz	60		
Display Refresh Rate	Hz	≥1920		
Drive Voltage(DC)	V	4.5~5.5		
Input Voltage	VAC	110 to 220@ 50-60 Hz		
Input Power (max/avg)	W/sqm	540/200	540/200	540/200
Noise	dB	0		
IP (Front/Rear)	IP	IP20		

Application

Conference Room
 Monitor Center
 LED TV Studio
 Shopping Mall
 Exhibition

